

PARK RULES

Adhere to Park entry and exit times. Unless you are an overnight visitor, always exit the park before dusk. Park gates open at 6:00 am and close at 6:00 pm.

1

General rules of the road apply. Car hooting and driving under the influence of alcohol is strictly prohibited.



Move slowly and quietly but remember all animals are wild and can react dangerously if startled.

3



All KWS parks, reserves and sanctuaries are SINGLE USE PLASTIC FREE ZONES.

NAIROBI SAFARI WALK

Park Contacts: 020)2618763 / (020)2379407

Toll Free Number: 0800597000 Email: nsw@kws.go.ke

f Kenya Wildlife Service @kwskenya kenyawildlifeservice kws.go.ke

PARK FEES

	Citizen	Residents	Non-Residents
	KSH	KSH	USD\$
Adult	200	200	20
Child/Student	100	100	10

Pay for your entry to any of our Parks or Reserves via:



SPECIAL SERVICES/ACTIVITIES

Animal Adoption Program - Resource Mobilization Department
rmm@kws.go.ke or kws@kws.go.ke

VEHICLE CHARGES PER DAY

The facility allows walking and therefore, vehicle entry charges do not apply.



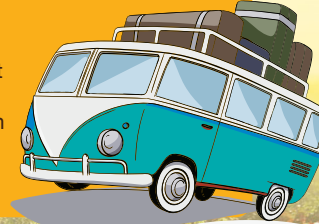
WHAT TO TAKE WITH YOU



Personal effects, bird identification books/reference material, drinking water, camera, binoculars, sunscreen, insect repellent and first aid kit.

HOW TO GET THERE

By Road: Nairobi Safari Walk is located about 8km from the Nairobi Central Business District and easily accessible from Nyayo National Stadium through to Lang'ata Road slightly past the Langata Army Barracks.



NAIROBI SAFARI WALK



The Closest you can get to the Wild

INTRODUCTION

Characterized by three simulated major ecosystems namely; wetland, savannah and forest, the Safari Walk is **the closest you can get to the wild.**

The raised wooden boardwalk that snakes around the ecosystem allows for uninterrupted views of the animals, the varied wildlife habitats, River Mokoyet and the beautiful rocky thickets of Nairobi National Park.

Visitors can discover the flora and fauna they expect to see across the country at the Nairobi Safari walk. They can sample the menu of the country's rich fauna and flora including the white rhino, Big cats, Crocodiles, Pigmy Hippo, antelopes and primates. It is also home to some 150 indigenous trees.

Other than game viewing, the facility is also a conservation education hub for schools, higher learning institutions and the general public. Conservation education conducted here is in an effort to foster and rally Kenyans and the public at large to take part and contribute in conservation of our wildlife heritage for the present and future generations and for the world. Nairobi Safari Walk also acts as a wildlife research center especially to students/learning institutions



KEY ATTRACTIONS & ACTIVITIES

The wildlife exhibits are designed in such a way that the visitors get an up close view of the animals at a safe distance. The identification boards on the cages offer more information about the animal in the exhibits thus allowing the visitors to derive a better experience from their visit.



Visitors can enjoy walking, picnicking, game and bird viewing. The Nairobi Safari Walk Children's museum with a diorama also offers a lot of information about flora and fauna.

Volunteer and internship opportunities are available for both local and international students and visitors.

For such enquiries, contact **Kenya Wildlife Service Human Capital Division, Training Department** on training@kws.go.ke

ACCOMMODATION

Stay in the Wild, explore, create memories

The sanctuary doesn't offer any self-catering accommodation options, but visitors can select from a wide array of accommodation options in Nairobi city and its environs.

